

## MEMBERSHIP AND ACCOUNT

### Become a French Cultural Center Member:

- Visit our reception desk in person
- Call 617.912.0400
- Join online via the membership page on our website

Please stop by the circulation desk with a credit card to fill out our security deposit and start using the library. You will be provided with a password to access your online library account as well as Culturethèque.

## LIBRARY CATALOG

Our catalog is accessible to everyone online, but members can use online services to place holds or renew items. The catalog can be accessed at: [www.frenchculturalcenter.org/index.cfm/library/](http://www.frenchculturalcenter.org/index.cfm/library/)

Members may access their accounts by entering their login and password on our physical library catalog. Other catalog features include making comments, lists and purchase suggestions.

## CULTURETHÈQUE

This platform brings you magazines, comic books, children's picture books, concert videos, books, cartoons and much more! Members receive access to thousands of resources to stream or download.

The collection also includes downloadable eBooks and eAudiobooks compatible with computers, iPads, Nook and Sony Readers. This platform can be accessed nationwide at [www.culturetheque.com](http://www.culturetheque.com).

Culturethèque is exclusive to more than 20 Alliance Française libraries in the U.S.



## BROWSING AND BORROWING

We welcome everyone to visit the library, browse our collections, and consult the catalog and the librarians.

Borrowing privileges are reserved for members of the French Cultural Center. Different levels of membership have different borrowing limits, as explained below.

MEMBERSHIP TYPE	TOTAL NUMBER OF DOCUMENTS
Individual	7
Family	17
Institutional	22

Borrowing privileges also include unlimited access to Culturethèque, the online library and newsstand.

## HOLDS, RENEWALS AND RETURNS

Some materials may be renewed if they have not been reserved by another patron. See below for details.

DOCUMENT TYPE	LOAN PERIOD	RENEWALS
Books, CDs & Magazines	3 weeks*	1
DVDs & Games	2 weeks	0

\* Institutional members may borrow books, CDs and magazines for 4 weeks.

Members can renew or place items on hold through their online account, or by calling or emailing the library. Upon request, holds placed by email or phone can be picked up at reception during open hours (including hours when the library is closed).

Members who cannot return items during library hours may leave them in the drop box by the front door of the Center or mail them to:

53 Marlborough St.  
Boston, MA 02116

## FINES AND CHARGES

### Fines apply for all overdue materials.

- \$1.00/day for DVDs
- 10¢/day for all other materials

### Lost items must be replaced.

- \$20.00 per lost book, CD or cassette
- \$30.00 per lost DVD
- \$5.00 per lost magazine

Material that is overdue for a month or longer will lead to a suspension of library privileges. In order to prevent the loss of materials, we are now instituting an automatic billing policy to replace lost/unreturned materials once they are 60 days overdue.

## ACTIVITIES

**Bouillon de Lectures.** *Book Club in French.* Monthly, Wednesdays 6:00 PM - 8:00 PM Intermediate level of French required. Free.

**Un Mois, Un Livre.** *Workshop in French.* Monthly, Wednesdays 2:00 PM - 3:30 PM Intermediate level of French required. \$20.00

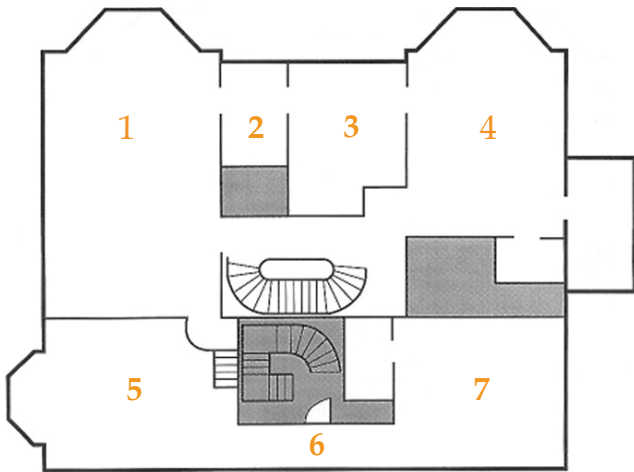
**L'Heure du Conte.** *Story time in French. Ages 2-5.* Bimonthly, First Saturday 11:00 AM - 11:30 AM Second Wednesday 11:30 AM - 12:00 PM. Free.

## OTHER SERVICES

**Reference Services.** We encourage patrons to make use of the library's many resources for information about France and francophone cultures in person, over the phone or by email.

**Copying.** Library staff can make copies upon request at a cost of 10¢ per copy. Total number of copies is limited to 15.





## LIBRARY HOURS

September - June Hours	
Monday	Closed
Tuesday - Thursday	10 - 7
Friday & Saturday	10 - 5
Sunday	Closed

July Hours	
Monday - Thursday	10 - 7
Friday	10 - 5
Saturday	Closed
Sunday	Closed

The Library will be closed during August so be sure to stock up in July! Members are allowed to borrow twice as many items and keep them until September 10.

The whole Center is closed on all Massachusetts holidays.

# LIBRARY USER GUIDE

DISCOVER OUR COLLECTIONS, RESOURCES AND POLICIES



## LIBRARY MAP



- 1 Reading Room  
Novels, CDs, Audiobooks
- 2 Theatre, Correspondance, Journals
- 3 Literature (criticism), Poetry, DVDs
- 4 Language Learning, Cooking, Graphic Novels, Arts
- 5 Children's Collection
- 6 Young Adults' Collection
- 7 Biography, Social Sciences, History, Geography, Tourism
- First Floor Reading Room  
Magazines, Newspapers



**CULTURETHÈQUE  
IS ALWAYS OPEN!**

[WWW.CULTURETHEQUE.COM](http://WWW.CULTURETHEQUE.COM)



FRENCH CULTURAL CENTER  
ALLIANCE FRANÇAISE OF BOSTON

53 Marlborough Street, Boston, MA 02116 | T: 617.912.0417  
librarian@frenchculturalcenter.org | [www.frenchculturalcenter.org](http://www.frenchculturalcenter.org)

